

## 旋变适配卡使用说明书

### (RTA-A200 标准型)

#### 技术参数

RTA-A200 旋变适配卡配置如下：

- ◆ 用于解码 BRX 旋转变压器输出信号；
- ◆ 分辨率可选 256C/T 或 1024C/T；
- ◆ 电机极数可选；
- ◆ 激励源频率可选 10K/20K；
- ◆ 运行温度：0 ~ 125 ℃。

#### 接线端口

接线端口如下图 1 所示：

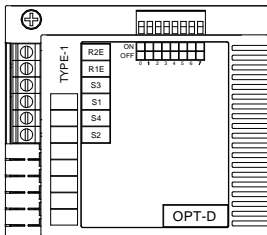


图 1 旋变适配卡端子示意图

## 端子规格

端子类型	端子名称	功 能
输出端子	R2E	激励源输出
	R1E	激励源输出
输入端子	S3	Cos 信号出入
	S1	
	S4	Sin 信号输入
	S2	

## 拨码开关

拨码开关如下图 2 所示：



图 2 拨码开关图

表 1 拨码开关描述

开关编号	功 能	ON	OFF
0	加速模式	关闭	打开
1	分辨率选择	1024C/T	256C/T

开关 编码	功能 极数	8 极	6 极	4 极	2 极
2	电机极 数选择	ON	OFF	ON	OFF
3		ON	ON	OFF	OFF
开关 编码	功能 频率	20KHz	10KHz	保 留	
4	激励源 频率	OFF	ON	其它情况	
5		OFF	OFF		
开关 编号	保 留				
6	X *				
7	X *				

备注：“\*”表示任意状态。

## 安装与拆卸

适配卡的安装与拆卸见图 3。

**注意：**适配卡和托盘上的对应的插座分大小两种，相同大小插座的适配卡可互换位置，该卡只能安装在插座 1。

### ◆ 安装

- ① 将适配卡按如图示方向水平放置，使卡上的插座对准适配卡托盘上的插座，下按直至适配卡紧贴托盘；
- ② 将适配卡左上角的 M3 固定螺钉打紧。



# USER MANUAL FOR ROTATING ADAPTER CARD

(RTA-A200 Standard)

## Technical Parameters

RTA-A200 rotating adapter card has following parameters:

- ◆ BRX Rotating transformer output signal for decoding ;
- ◆ Resolution is optional between 256C/T and 1024C/T ;
- ◆ Motor pole is optional;
- ◆ Excitation source frequency is optional between 10K and 20K ;
- ◆ Operating temperature: 0 ~ 125 °C .

## Interface

Wiring interface is shown in Figure-1 below:

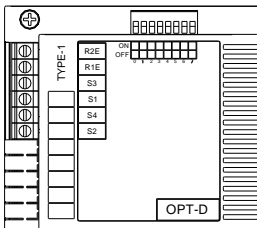


Figure-1 Terminals of Adapter Card

## Terminals & Functions

Type	Name	Function
Output terminal	R2E	Excitation source output
	R1E	Excitation source output
Input terminal	S3	Cos signal output and input
	S1	
	S4	Sin signal input
	S2	

## Dial switch



Figure-2 Dial Switch

Table1 Dial switch description

Switch code	Function	ON	OFF
0	Acceleration mode	Closed	Open
1	Resolution option	1024C/T	256C/T

Switch code	Function	8-pole	6-pole	4-pole	2-pole
	Number				
2	Motor pole option	ON	OFF	ON	OFF
3		ON	ON	OFF	OFF
Switch code	Function	20KHz	10KHz	Reserved	
	Frequency				
4	Excitation source frequency	OFF	ON	Others	
5		OFF	OFF		
Switch code	Reserved				
6	X *				
7	X *				

**Note:** “\*” indicates any status.

## Assembly & Disassembly

The adapter card is assembled and disassembled as shown in Figure-3.

**NOTE:** There're two sizes of jackets on the tray and card sockets. The adapter cards may be inserted in either jacket of the same size on the tray. This card could be only inserted in Socket 1.

### ◆ Assembly

1. Place the adapter card horizontally in the direction as shown in the figure and align socket of the card with the jacket of card tray, and press until the adapter card hug the tray closely;
2. Tighten the M3 fixing screw at top left corn of the adapter card.

## ◆ Disassembly

1. Loosen M3 fixing screw at top left corn of the adapter card;
2. Pull the adapter card upward from card tray.

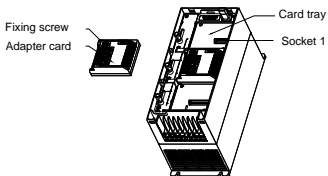


Figure-3 Assembly and Disassembly of Adapter Card

## Wiring

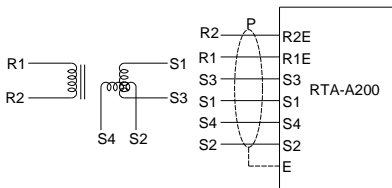


Figure-4 Wiring of Adapter Card